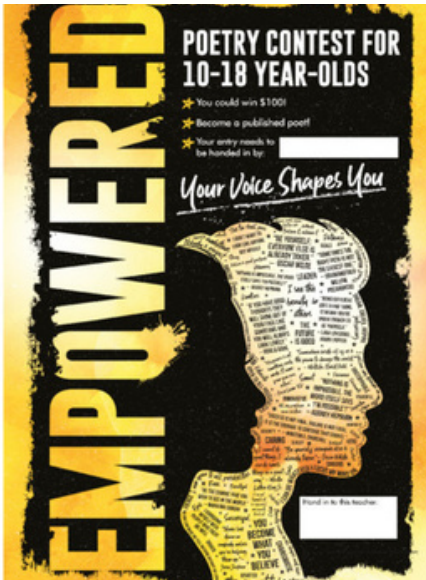


Special School - Primary PRU - Secondary PRU - Hospital Medical



Pupils' powerful poetry picked for publication

Empowering poems by two teenagers from Castle Education Centre have been chosen from thousands of others to be published in a poetry book.

Kye Purcell Conboy, 16, and Aisha Russell, 15, wrote the poems during an English class with teacher Kat Christopoulos.

It was part of the national Young Writers competition with the theme of "empowerment".

The two teenagers chose to spend their class penning the powerful poems, Kye's called Tired, and Aisha's No. They impressed their teacher so much, she encouraged them to enter them into the competition.

"What really impressed me about these poems were how Kye and Aisha managed to express so much in so few words," said Ms Christopoulos. "Their choice of words and how they played with poetic language was so clever and the finished poems were both powerful and moving. I am so proud of them."

The poetry anthology, called Empowered, has now been published and is available online.

Kye said: "I hope that at least one person picks up the book and decides to start writing because of it."

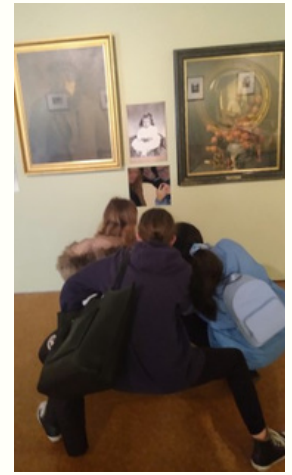
IN THIS ISSUE

MUSEUM & ART GALLERY TRIP HELPS KINGSMEAD PUPILS GET CREATIVE

TOYOTA PARTNERSHIP MAKES HEADLINES IN THE LOCAL PRESS

SPECIAL SCHOOL PUPILS ENJOY A JUNGLE JAUNT

WHY WILF IS OFFICIALLY OUR OWN TOP DOG



Creative workshops at Derby Museum & Art Gallery

We're not sure who enjoyed our recent cultural trip to Derby Museum and Art Gallery more - staff or students? But the keystage three students had a lot of fun and learned a great deal.



Why Kingsmead School is making headlines

facebook.com/derbysirelive

SATURDAY, JANUARY 29, 2022 DERBY TELEGRAPH 11

Right, Mike Pride and Toyota's Mandy Evans. Main image: Mandy with some of the pupils

TOYOTA MANUFACTURING UK
Young People Learning skills for the future

SCHOOL PARTNER

Pupils inspired by their school's ties with Toyota

PUPILS at The Kingsmead School are being inspired by a partnership with Derbyshire-based car-manufacturer Toyota.

The collaboration, extended to just a handful of schools in the city, means pupils at Kingsmead's sites will be supported in their studies, develop employability skills and have the chance of work experience placements at the Burnaston manufacturing plant.

It will help the school, which caters for children with social, emotional and mental health issues, maintain its low NEET figures - children who are not in education, employment or training after 16.

Last year, 95% of Year 11s at the school had a place in education or employment after leaving - well above the national average.

Marsha Johnson, school careers co-ordinator, said: "We are passionate about equality and offering the same opportunities to all our students regardless of their educational background or social circumstances. Careers support is a huge part of our PSHE curriculum and to add not only a local, but an international company, to the businesses and industries being promoted to our students is huge.

"Connecting pupils with Toyota and sharing the fantastic opportunities that exist will drive them on to potentially explore apprenticeships in their chosen field, providing them with on-the-job training and promising careers."

The announcement comes after five young pupils secured apprenticeships earlier this year on the Toyota Production Apprenticeship Scheme.

As a partner school, youngsters from primary to post-16 will have access to designed, bespoke support packages. Toyota's involvement includes events such as engineering days, work experience, careers talks and tours, CV and revision workshops.

Executive head teacher Mike Pride said: "This venture has grown from a very successful experience led by our Second in Department for English, Caron Fellows, which saw some pupils gain apprenticeships.

"Everyone at The Kingsmead works hard to ensure our pupils achieve their full potential and this will encourage and inspire our students while showing them the opportunities available to them."

Mandy Evans, Toyota's Young People Education Lead, said: "We are delighted to partner with Kingsmead School to support the young people on their educational journey, inspiring them to reach their potential and to achieve great outcomes."

Council tax bills are

Property

Did you spot us in the Derby Telegraph - our new partnership with Toyota UK made headlines this term. The collaboration partnership, which is extended to just a handful of schools in the city, means that pupils attending Kingsmead's sites will be supported in their studies, develop employability skills and have the opportunity of meaningful work experience placements at the Burnaston plant.

Special school pupils take a walk on the wild side

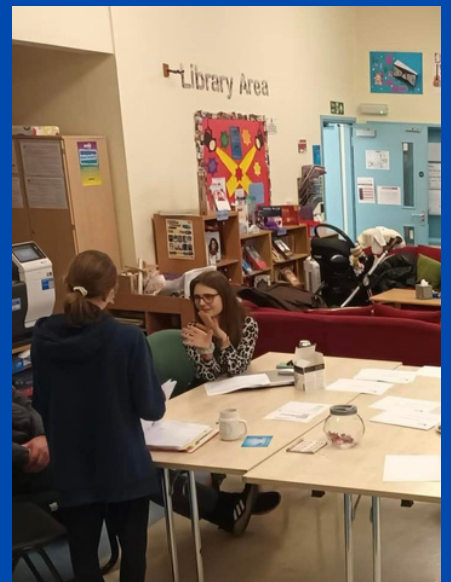


Pupils in Year 8 at our special school thoroughly enjoyed a visit from Jungle Jo.

They got to meet various creatures which tied in with their current topic work on Rainforests. Every bug and reptile they met had come from rainforests around the world. They all had so much fun and learned lots of interesting facts!



PARENTS EVENING HAILED A SUCCESS



We were thrilled that so many parents and carers came to see their children's teachers at Castle this term; it was great to hear so many positive comments about the great progress that the pupils are making. We are really proud of them all.

Official assistance status for Kingsmead's top dog



We are really proud that our therapy dog Wilf has become a fully fledged assistance dog after passing all his tests - with a little help from our students.

Training a dog to qualify as an assistance dog takes hard work and dedication from the owner and the trainer and results in a highly trained, well-socialised, well-behaved dog who can remain calm, alert and under control in any situation.

We are very grateful to Wilf's owner Vicki Cutting for her endeavours - Wilf is an integral part of the staff here at the school - even Ofsted recognised his status in school.

Vicki said: "I'd like to thank everyone at the special school for their support in Wilf's test. It was long and hard work and the students (and staff) were absolutely amazing.

"It was a real pleasure to see them trying their very best to show external visitors how proud they were of 'their dog'. The individual students that came out to help were enthusiastic, respectful and happy to talk."

WILF IS OFFICIALLY A MODEL HOUND

Our pupils have always known Wilf was a model dog - and now it's official. Here he is featuring on the Joules page, flying the flag for Kingsmead. Next stop Vogue?



POSTAL PRAISE FOR PUPILS

Pupils in 7N1 have been sent postcards from their teacher to mark their fantastic presentation skills in a recent project.

The group did some brilliant research about Shakespeare and presented their findings to their peers on Friday.

They then peer assessed each

other's presentation and active listening skills. We were SO proud of them! Well done 7N1!!

- To keep up to date with what's happening at Kingsmead School follow us on Facebook @kingsmeadderby